



The National Center on Homelessness Among Veterans

Promoting data-driven, evidence-based solutions to end Veteran homelessness

Homelessness Prevention and Rapid Rehousing for Veteran Families: Housing Outcomes of Veterans Exiting the Supportive Services for Veteran Families (SSVF) Program

Tom Byrne

National Alliance to End Homelessness Annual
Conference

July 22, 2013

Washington, DC



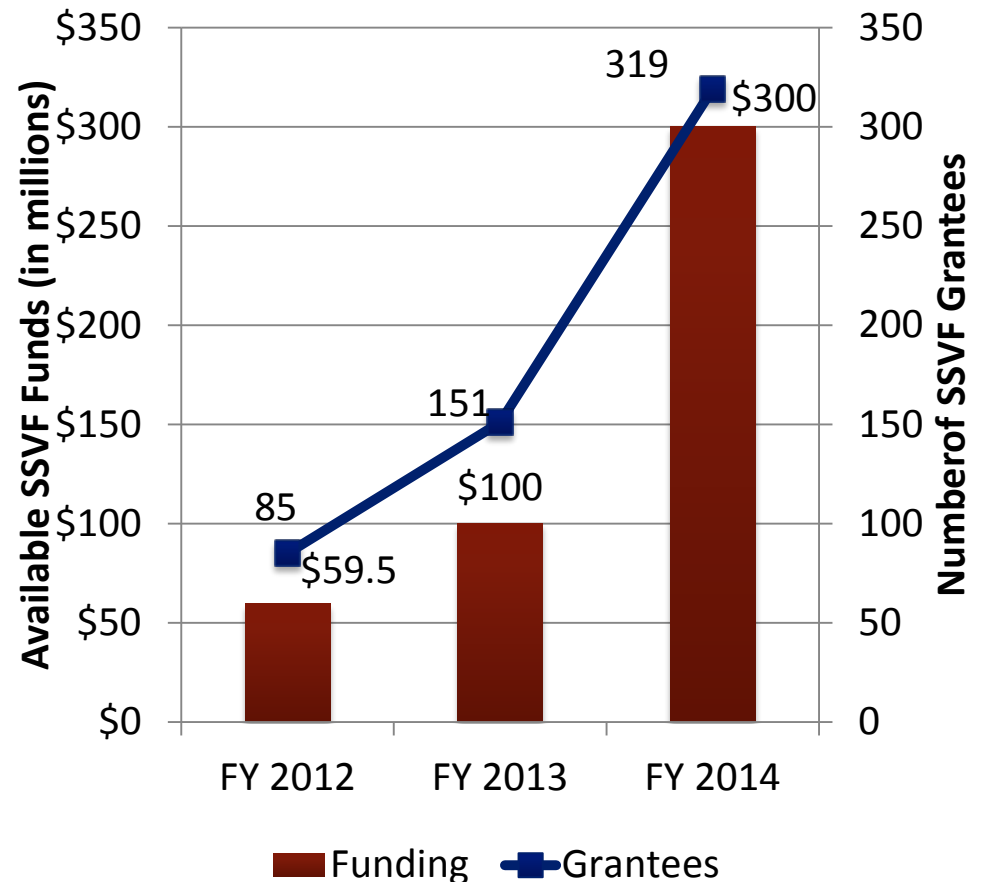
The National Center on Homelessness Among Veterans

Promoting data-driven, evidence-based solutions to end Veteran homelessness

SSVF OVERVIEW

- Funds community-based organizations to provide homelessness prevention and rapid rehousing services to veteran households
- Short-term assistance to maintain/obtain housing
- “But for” intervention

SSVF Funding and Grantees





The National Center on Homelessness Among Veterans

Promoting data-driven, evidence-based solutions to end Veteran homelessness

SSVF Eligibility

- Veteran or person in family in which HH or spouse of HH is a Veteran
- Income <50% of Area Median Income (AMI)
- Category 1: Prevention
 - At imminent risk losing housing. Must also meet additional criteria (e.g. multiple moves due to economic hardship in past 60 days, doubled up due to economic hardship, exiting an institution)
 - Individual grantees set their own prevention eligibility thresholds for prevention based on standardized assessment form
- Category 2 & 3 : Rapid Rehousing
 - Homeless per McKinney Vento definition (Category 2)/exited permanent housing within 90 days to seek other housing (Category 3)
- 60% of grantee funds must be spent on Rapid rehousing

SSVF Services

1. Outreach

- In community & VA

2. Case management

- Careful assessment of needs
- Housing stability plan

3. Assistance in obtaining VA benefits

- Health care
- VBA benefits (education/vocational, pensions)

4. Assistance in obtaining mainstream benefits

- Legal assistance, credit counseling
- Income support (e.g. TANF, SNAP, etc.)

5. Temporary Financial Assistance

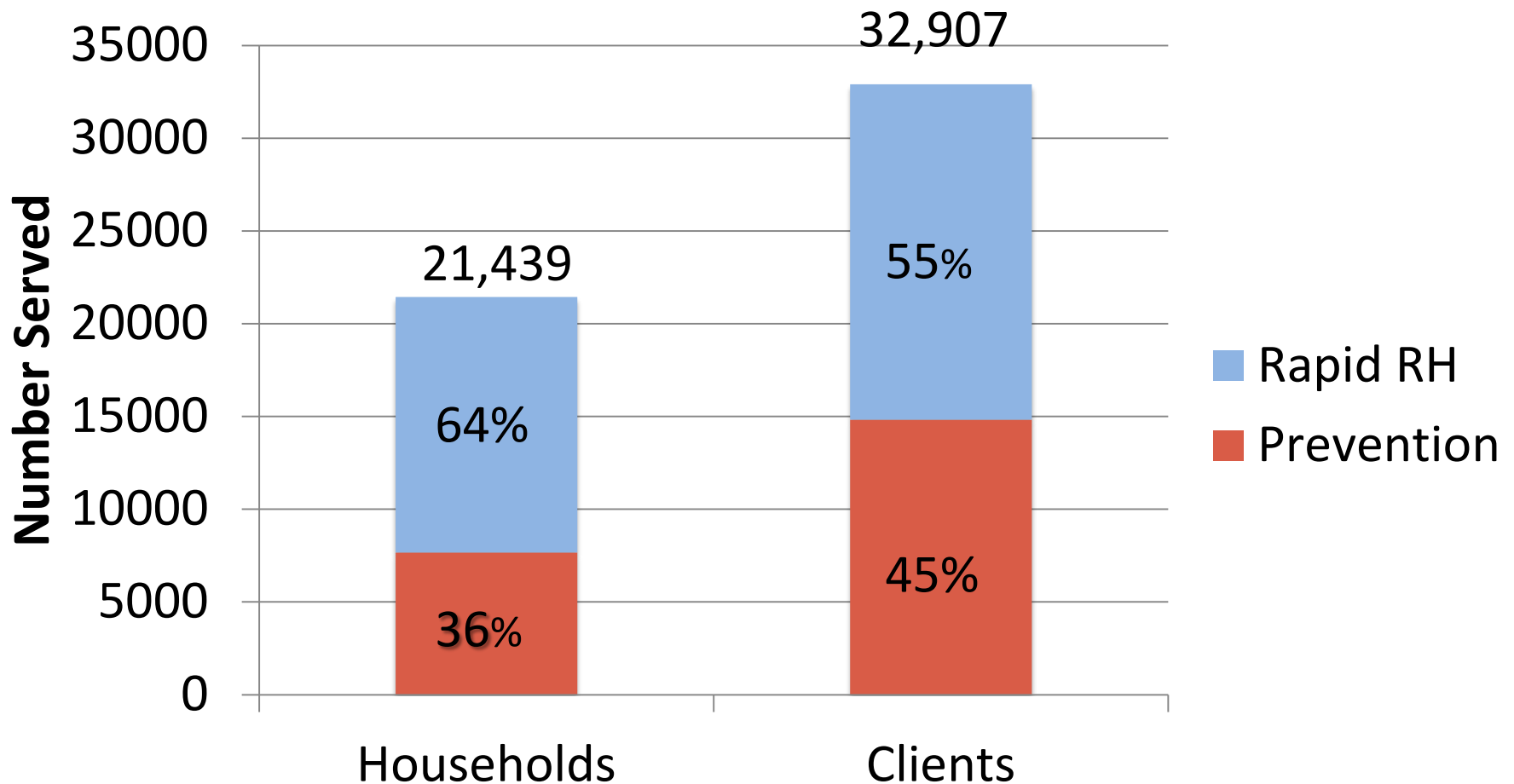
- Rental assistance, utility payments, security deposits, moving costs, emergency supplies, child care, transportation



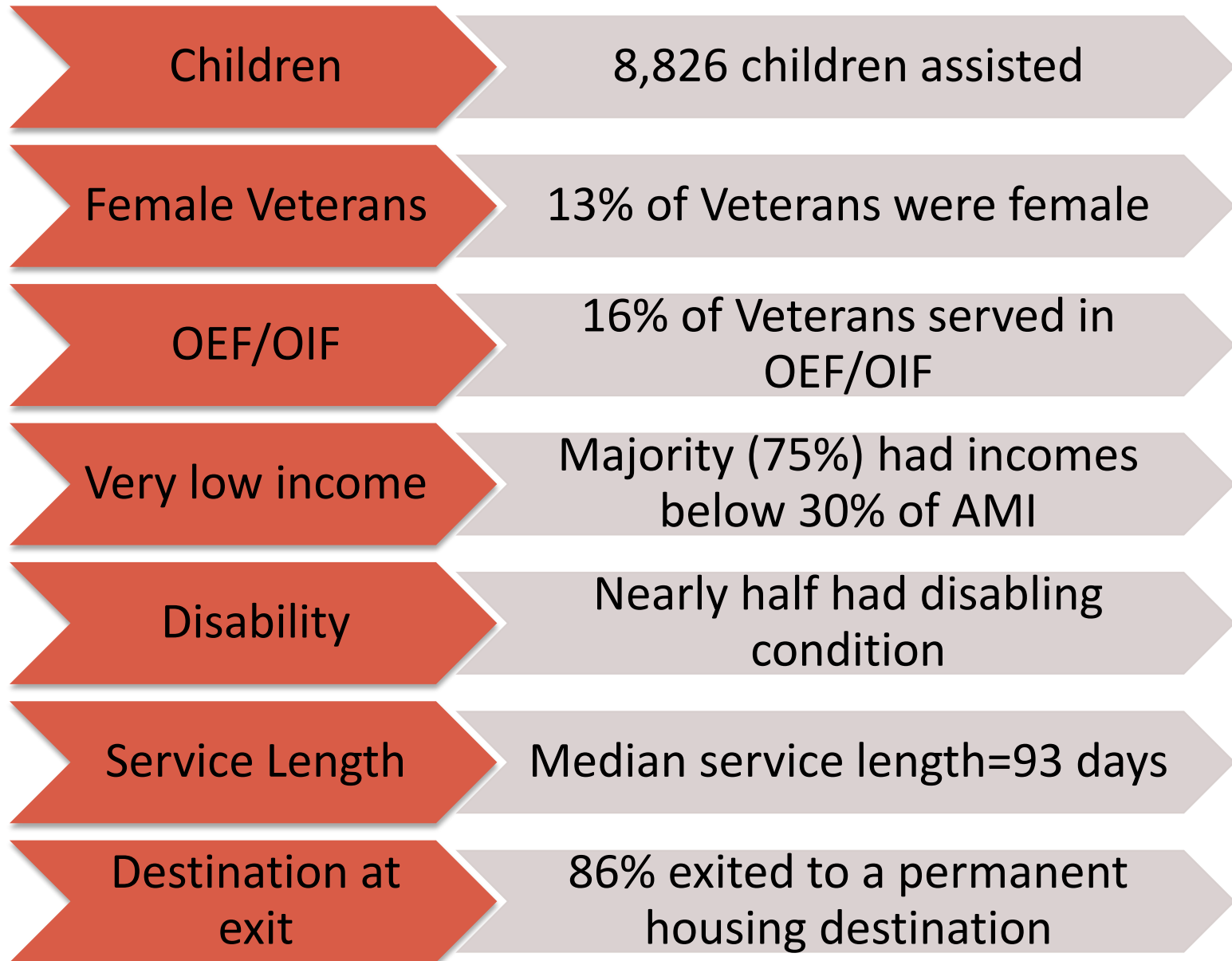
The National Center on Homelessness Among Veterans

Promoting data-driven, evidence-based solutions to end Veteran homelessness

SSVF Year 1 Metrics



SSVF Year 1 Metrics





The National Center on Homelessness Among Veterans

Promoting data-driven, evidence-based solutions to end Veteran homelessness

Evaluation of Housing Outcomes: Preliminary Analysis

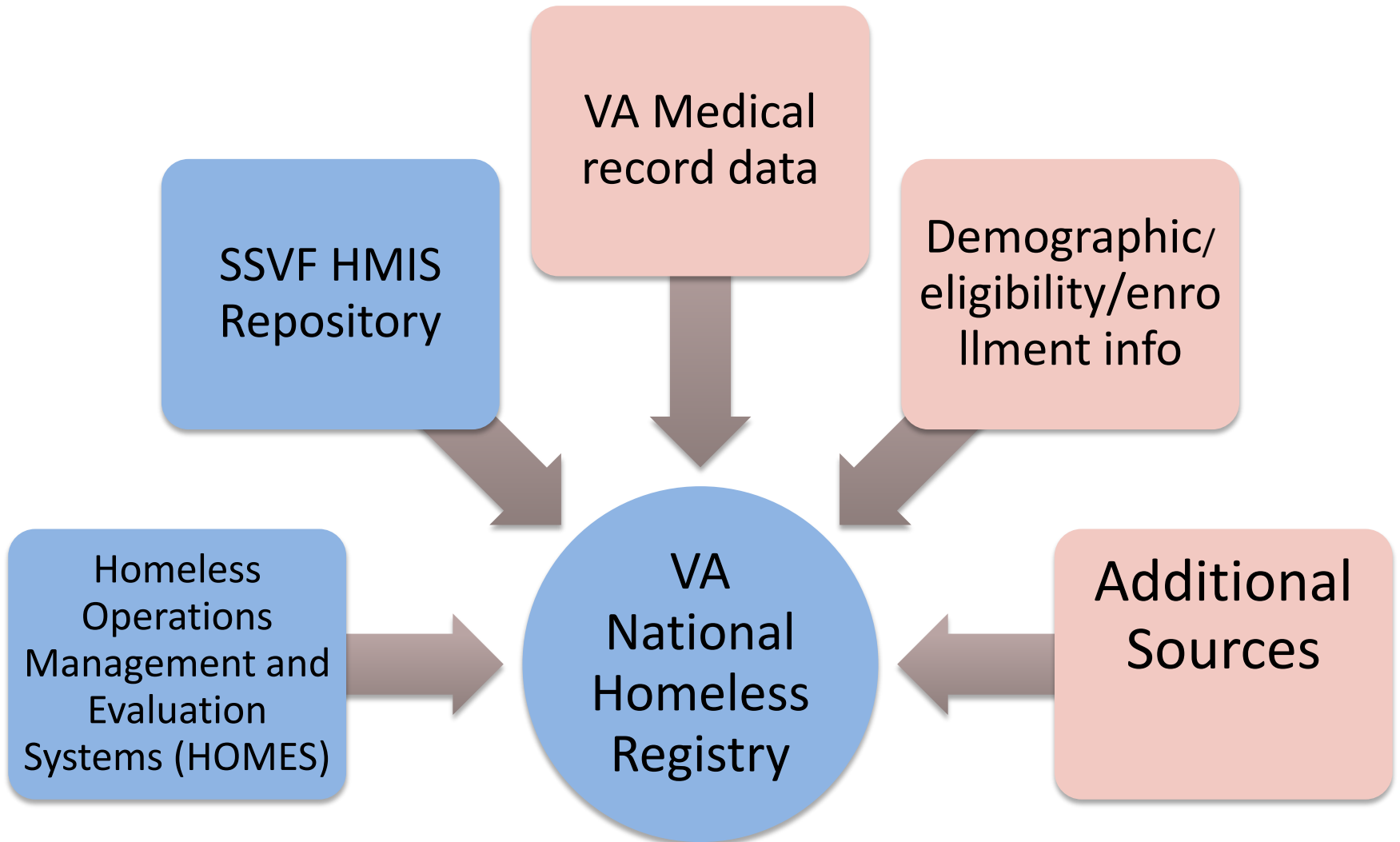
1. Examine Veterans' housing stability over time following exit from SSVF
 2. Assess relationship between housing stability and Veteran characteristics & SSVF program factors
- Results of preliminary analysis presented today



The National Center on Homelessness Among Veterans

Promoting data-driven, evidence-based solutions to end Veteran homelessness

Data Sources



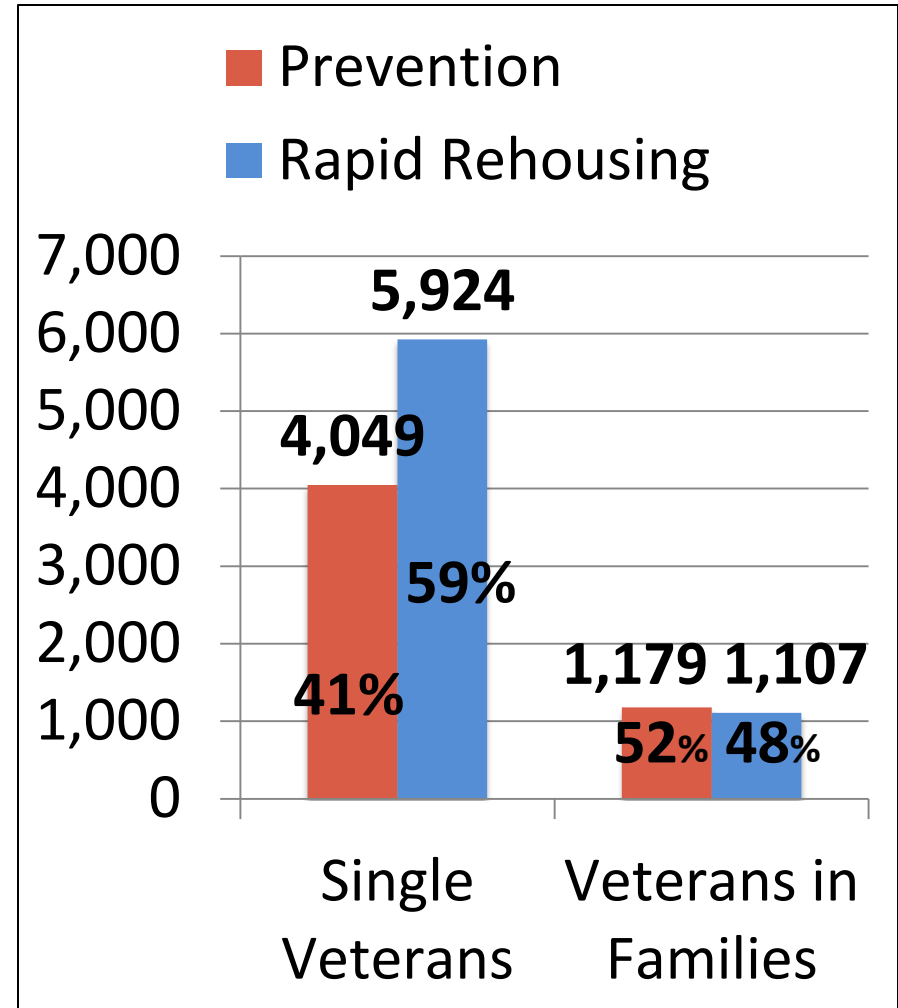


The National Center on Homelessness Among Veterans

Promoting data-driven, evidence-based solutions to end Veteran homelessness

SSVF Exiter Cohort

- All **Veteran** participants who exited SSVF in FY 2012 (Oct. 1, 2011-Sept 30, 2012)
 - Excluded persons with missing housing status at entry, or missing/invalid Social Security numbers
- Stratified into 4 groups for analysis
- Present Analysis focuses on those who exited to non-homeless destination (~90% of sample)





The National Center on Homelessness Among Veterans

Promoting data-driven, evidence-based solutions to end Veteran homelessness

Outcome Measure: Housing Stability

- Measured as time to first episode of homelessness following exit from SSVF
- Homeless episode included:
 1. Record of completion of HOMES assessment
 2. HOMES record of entry into a VA specialized homeless program
 3. Record of use of SSVF rapid rehousing services
- Key limitation: Will **only** identify users of VA homeless services



The National Center on Homelessness Among Veterans

Promoting data-driven, evidence-based solutions to end Veteran homelessness

VETERAN CHARACTERISTICS

- Age
- Gender
- Race/Ethnicity
- Presence of disabling condition
- Number of children (families only)
- Homeless history
- Income level

PROGRAM FACTORS

- Length of participation
- Type of service:
 - Legal, health, housing placement, rental assistance, security deposit, utility payment, moving costs
- Receipt of any TFA
- Destination at exit from program
 - VASH, other permanent, temporary with fam/friends, shelter, other
- Region of country



The National Center on Homelessness Among Veterans

Promoting data-driven, evidence-based solutions to end Veteran homelessness

Analysis

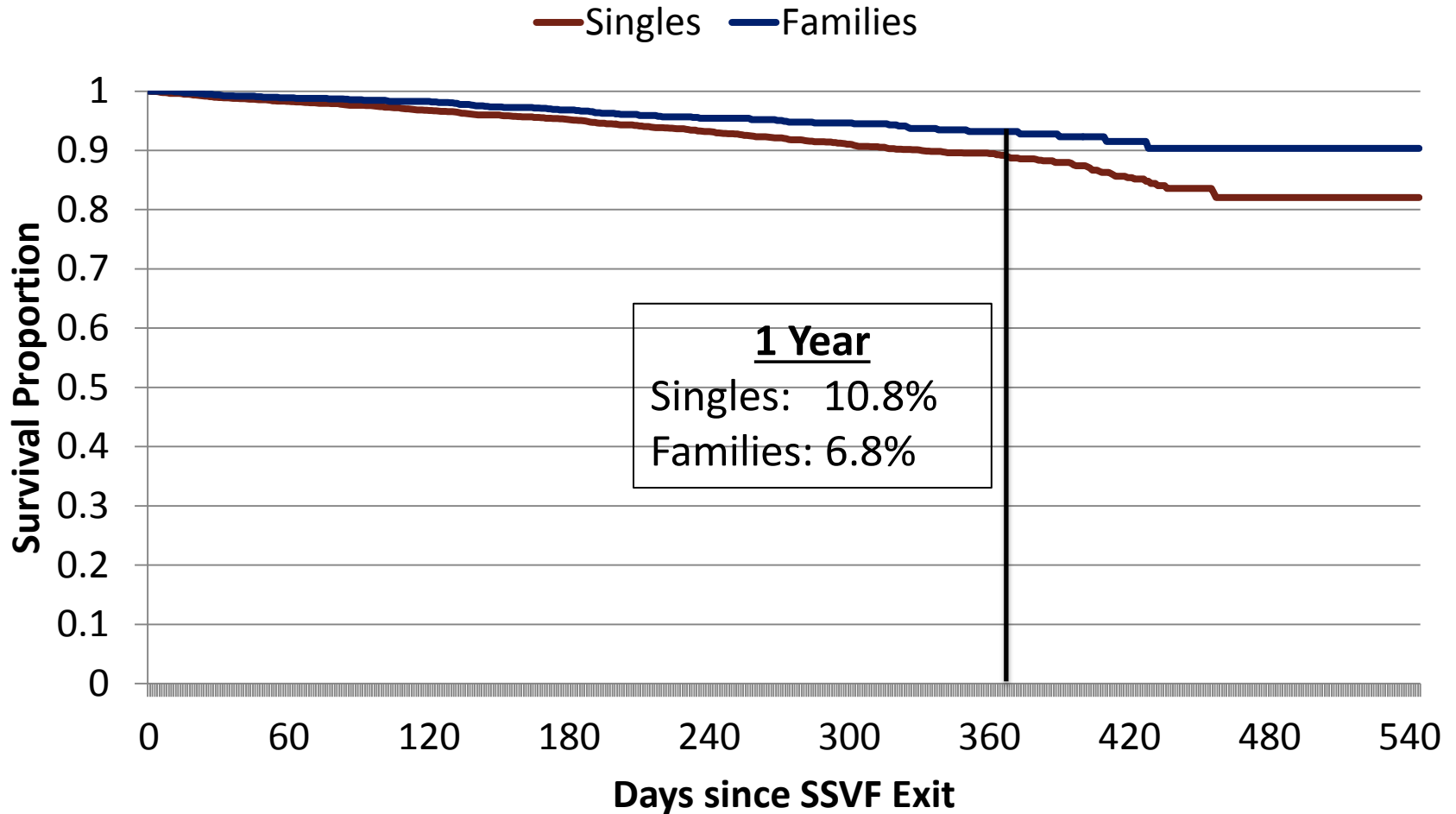
- Survival analysis methods used to examine housing stability
- Survival Curves & Cox proportional hazard regression models
- Surviving cases censored on 3/31/2013
 - Maximum follow up time 544 days (~18 months)



The National Center on Homelessness Among Veterans

Promoting data-driven, evidence-based solutions to end Veteran homelessness

Results: Prevention

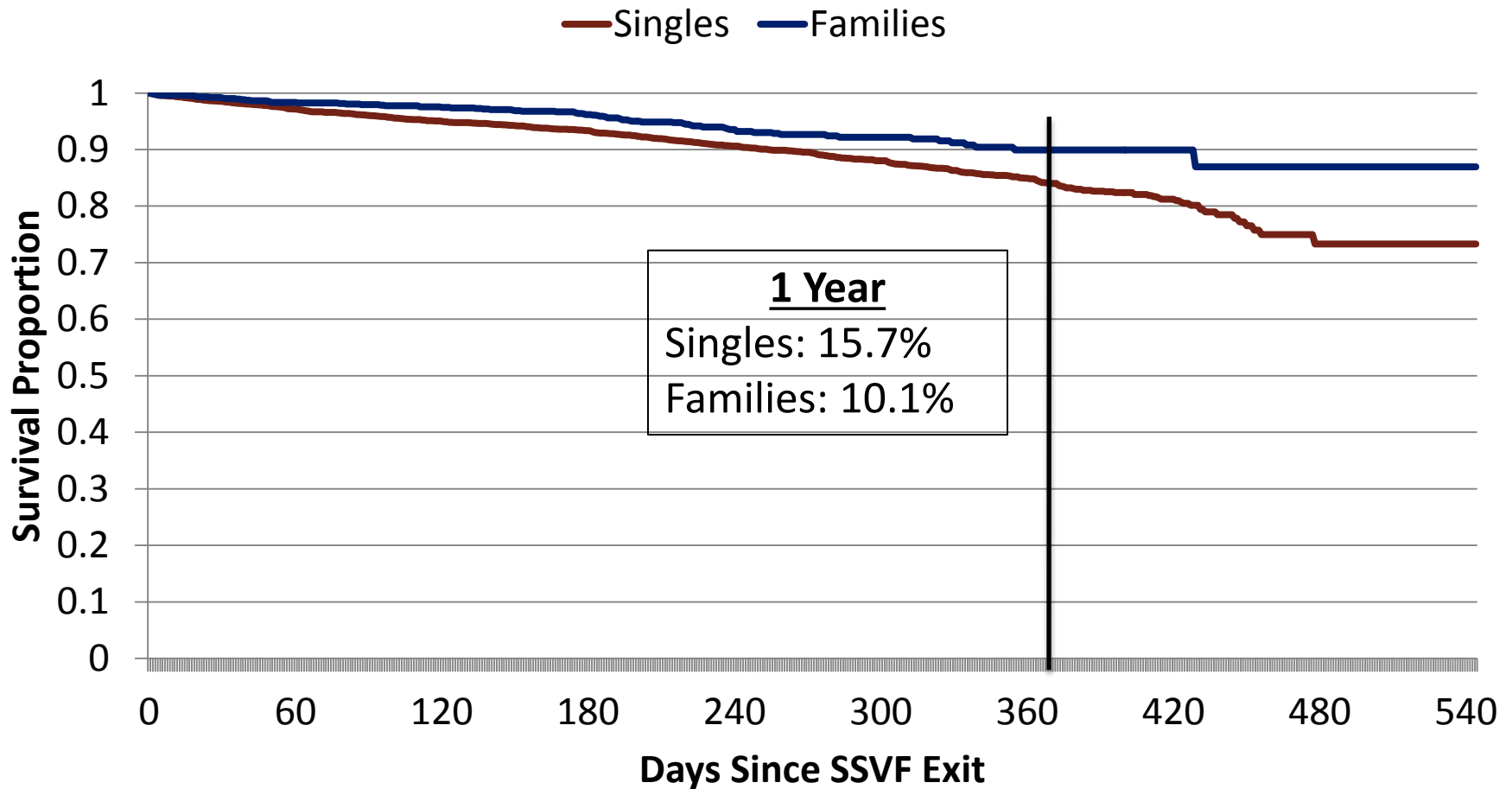




The National Center on Homelessness Among Veterans

Promoting data-driven, evidence-based solutions to end Veteran homelessness

Results: Rapid Rehousing



	Singles		Families	
	<u>Prev.</u>	<u>RR</u>	<u>Prev.</u>	<u>RR</u>
Age (compared to 18-30 years)				
30-44		+		
44-54	+	+		+
54-61	+			+
62+				
Male				
Hispanic				
Race (compared to whites)				
Black				
Other				
Disabling Condition				+
# of Children (compared to 1 child)				
2 Children				
3+ Children				
History of homelessness	+	+		
Monthly income (compared to <\$500)				
\$500-\$1000				
\$1001-\$1500				
\$1501-\$2000				
\$2500+				

	Singles		Families	
	<u>Prev.</u>	<u>RR</u>	<u>Prev.</u>	<u>RR</u>
Participation length > 90 days		+		
Legal Services				
Health/BH services				
Housing placement/search services				
Rental assistance				
Security Deposit				
Utility Payments				+
Moving Costs				
Any temp financial aid		-		
Exit destination (compared to temporary with family/friends)				
VASH	-	-		-
Other Permanent	-	-		
Other unknown				
Region (compared to Northeast)				
South				-
Midwest				-
West				



The National Center on Homelessness Among Veterans

Promoting data-driven, evidence-based solutions to end Veteran homelessness

Implications

- Exit to permanent (as opposed to temporary) destinations associated with reduced likelihood of return to homelessness
- Income level, disabling condition and participation length are not strong predictors
 - Suggests program can be effective for households with range of needs
- Assistance type variable not strong predictors
 - May be due to program flexibility



The National Center on Homelessness Among Veterans

Promoting data-driven, evidence-based solutions to end Veteran homelessness

Next Steps

- Much more to be done
 - Split out VASH exiter
 - Closer look at program factors
 - More fine grained look at relationship between service types and housing stability
 - E.g. amount of financial assistance
 - Geographic (e.g. urban, vs. rural)/program & agency level factors